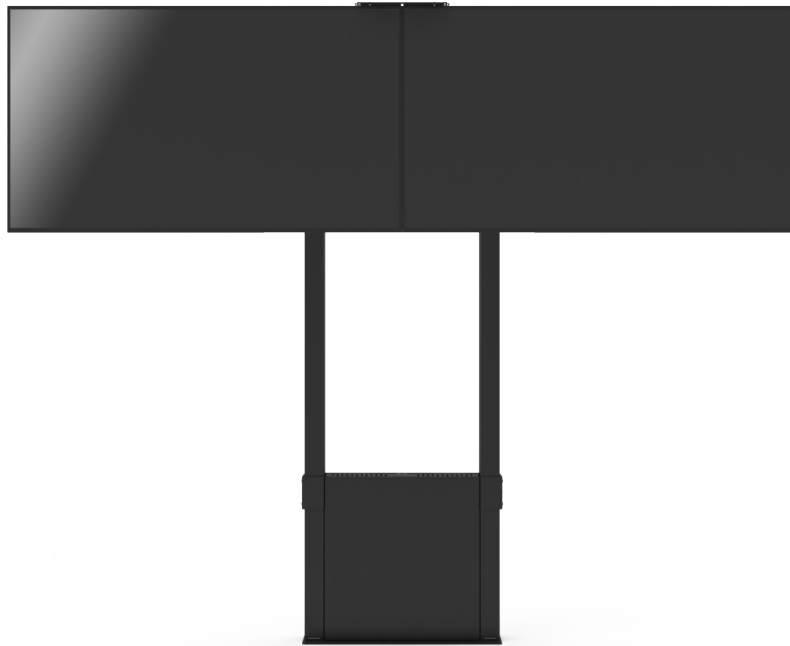


# Func Wall/Floor Video Conference



---

## **Simplicity and stability.**

Func Wall/Floor Video Conference is easy to adjust for different needs. The very stable design is perfect for large heavy displays and touch-sensitive displays. Thanks to the smart design that shifts the weight to the floor, you can mount this also on thin walls e.g. at events. Perfect for small spaces where a large base plate would be in the way. The design includes a storage box for mini-PC, codec or laptop, easily accessed from the front. The box can be locked with a padlock (not supplied).

The displays can also be locked with a padlock (not supplied) or the accompanying locking pin, which provides increased protection from theft and personal safety. A black camera shelf is included in the delivery.

**INFO**

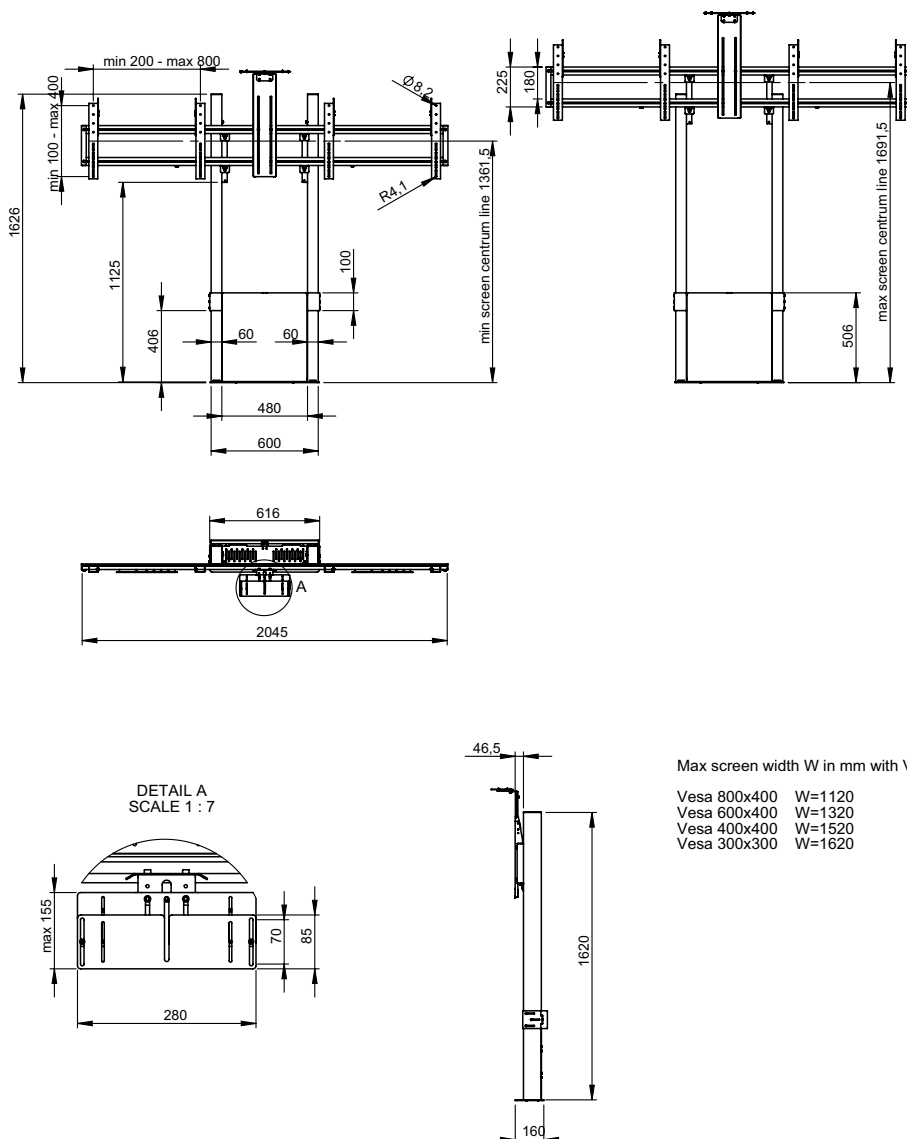
Finish: Black  
 Rec. display size, approx. 46" - 65"  
 Maximum weight of each display: 55 kg  
 Horizontal VESA: 200 - 800  
 Vertical VESA: 100 - 400  
 The displays can be locked with the accompanying locking pin or with a padlock (not included).  
 Dedicated area for storage inside the product [mm]:  
 496 x 472 x 96.  
 A camera shelf (black) is included.  
 The display holders can be moved stepwise in height at installation.

**ART. NO.      DESCRIPTION**  
**FMN092001-P0** Func Wall/Floor Video Conference

**NB!** Apart from the display weight and the VESA standard, please make sure that your display is not wider than given max display width in table here below.

Max display width in mm:  
 VESA 300x300    W=1620  
 VESA 400x400    W=1520  
 VESA 600x400    W=1320  
 VESA 800x400    W=1120

**PRODUCT DIMENSIONS [mm]**



Max screen width W in mm with Vesa:

Vesa 800x400	W=1120
Vesa 600x400	W=1320
Vesa 400x400	W=1520
Vesa 300x300	W=1620

