

# Classroom Management Software



**12 MILLION  
DEVICES**

Powering over 12 million  
devices



**#1  
FEATURE**

Thumbnail Monitoring  
ranked #1 feature from  
LanSchool customers

(2016 ISTE Customer Survey)



**ALL OPERATING  
SYSTEMS &  
DEVICES**

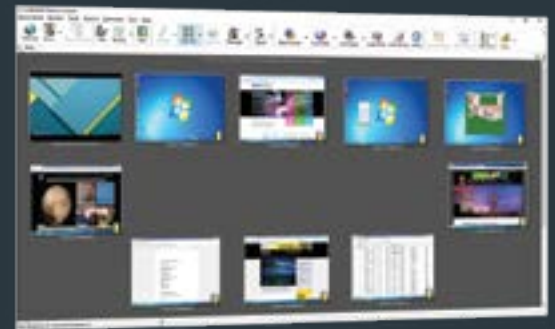
LanSchool works across  
operating systems and  
devices, including mixed OS  
environments

(Windows, Chrome, OS X,  
Android\*, and iOS\*)



**LAN SCHOOL** HELPS US  
MAINTAIN A **SAFE, SECURE,**  
AND **PRODUCTIVE** LEARNING  
ENVIRONMENT

- Collin Miller, Technology Administrator  
Taos Academy Charter School, NM



**CONTACT US FOR A  
FREE TRIAL TODAY!**



888-473-9485 [U.S. and Canada]  
860-819-3774 [International]

[sales@lenovosoftware.com](mailto:sales@lenovosoftware.com)  
[lenovosoftware.com/lanschool](http://lenovosoftware.com/lanschool)

# Simple, Reliable Classroom Management Software

RUN LAN SCHOOL **V8.0** TURBO MODE FOR UP TO **8X FASTER PERFORMANCE**



## MAINTAIN STUDENT FOCUS AND INCREASE PARTICIPATION

Keep track of individual progress, provide real-time guidance, and evaluate overall class performance.

- View all student screens with Thumbnail Monitoring
- Share teacher screen for demonstration
- Showcase students' work by sharing their screens
- Provide feedback and assistance through chat or group messaging
- Limit access to approved websites and applications



## SPEND MORE TIME TEACHING

Maximize valuable classroom time with many time-saving features.

- Share videos and media instantly with 4x faster performance than previous versions
- Launch applications or websites instantly
- Blank screens to redirect class focus
- Quickly assist students with remote control access
- Power all devices on and off simultaneously



## ALL-NEW REPORT INTERFACE SUPPORTS E-SAFETY

Protect and monitor students with enhanced reporting functions.

- New dashboard reports include: browsing history, application usage, device and software inventory, and more.
- Advanced filtering and monitoring: customizable banned language reporting with alerts and screen grabs\*
- Real-time scans can detect concerns including: violence, bullying, depression, drugs, and inappropriate topics\*

\*Not available for Chromebook



## SIMPLIFY IT ADMINISTRATION AND PROCESSES

The LanSchool Tech Console\* is a network maintenance and support module that enables your tech departments to:

- Manage system data and diagnostics
- Report on technology usage (web and applications)
- Install and update applications to end users remotely
- Provide support through remote control and chat
- Monitor student activity and devices

## CHROMEBOOKS

- ✓ Works on all versions of Chrome
- ✓ Designed for Chrome OS (or mixed OS) environments
- ✓ Teach, share, collaborate, and keep students on track
- ✓ Expect the same great performance for your Chromebooks



CONTACT US FOR A  
FREE TRIAL TODAY!



888-473-9485 [U.S. and Canada]  
860-819-3774 [International]

[sales@lenovosoftware.com](mailto:sales@lenovosoftware.com)  
[lenovosoftware.com/lanschool](http://lenovosoftware.com/lanschool)