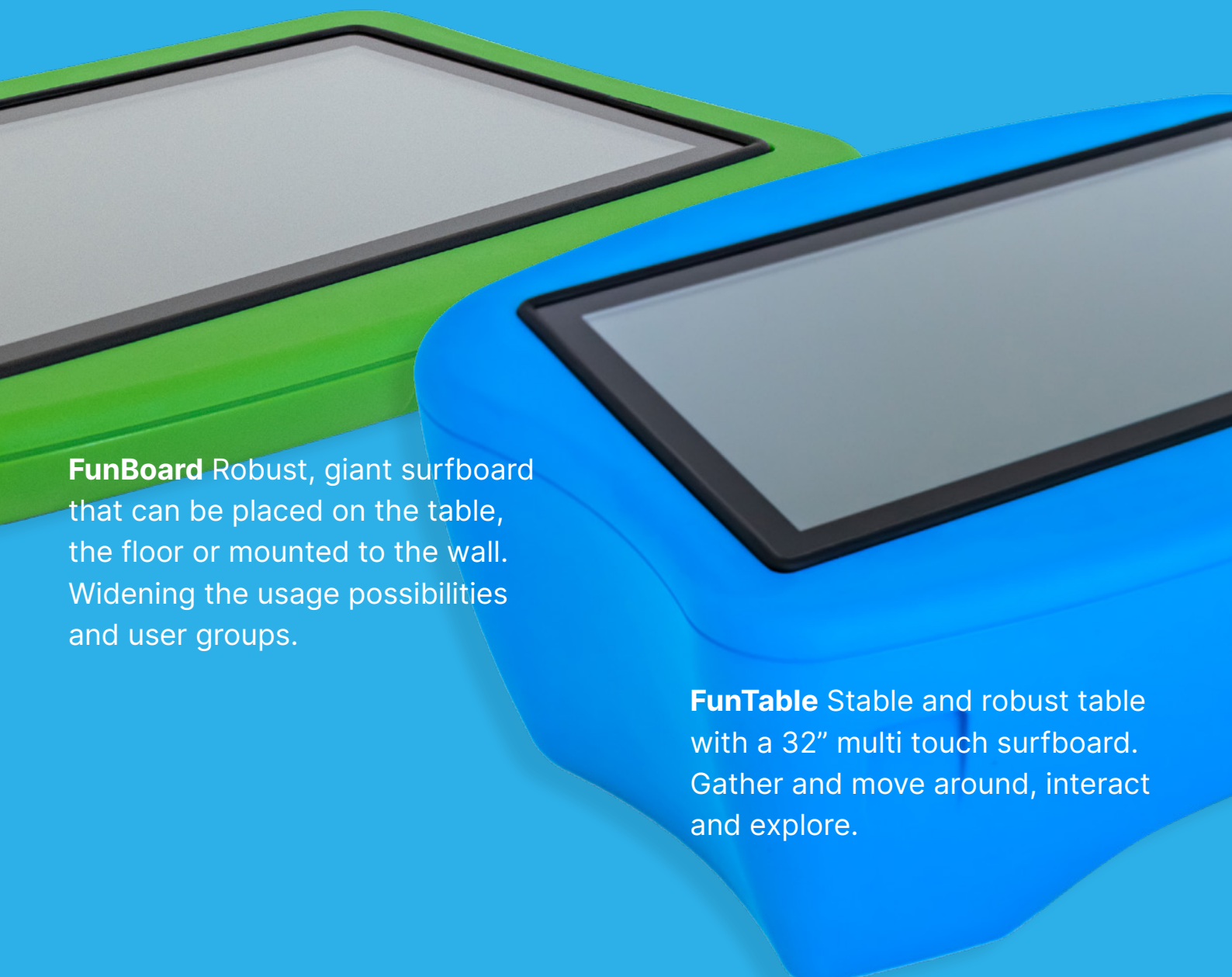


Wholesome Digital Experiences

Introducing Manico's **giant, robust multi-touch tablets**. Built and designed for **collaborative, engaging and wholesome digital experiences** and charged with exclusive software to deliver **superior education and entertainment possibilities**.



FunBoard Robust, giant surfboard that can be placed on the table, the floor or mounted to the wall. Widening the usage possibilities and user groups.

FunTable Stable and robust table with a 32" multi touch surfboard. Gather and move around, interact and explore.

FunTable



FunTable is a giant multi-touch surfboard for children. It is housed in a stable, durable and colorful table-shaped box. It is just like a tablet, but bigger. Much bigger.

Through its accessible design and software offerings, FunTable enables joyful learning, collaboration and movement.

What makes Manico's FunTable unique is that several children can simultaneously point, draw, click around and interact with the on screen content. It is stable and robust and can sustain children's playful handling and therefore fits well in indoor environments where children gather and play.

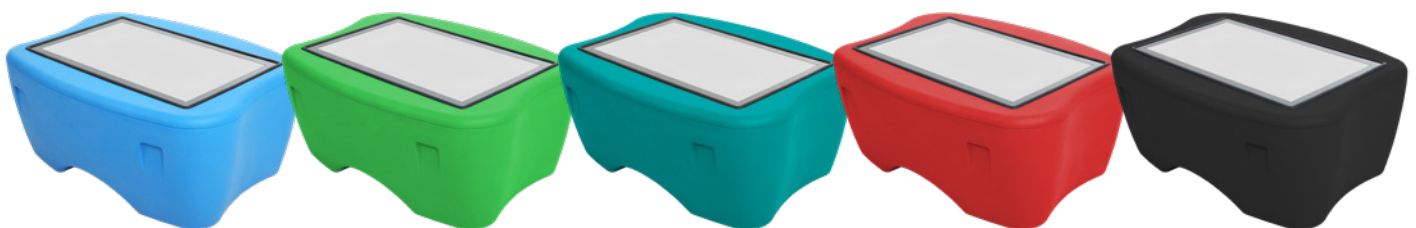
FunTable enables and promotes joyful learning and inclusive playfulness. Children are engaged, stimulated and challenged in educational programs and games.

FunTable is the perfect companion in the the digitization of preschools and schools.

FunTable fits well in a wide range of indoor environments and is commonly used in preschools, schools, museums, libraries, shopping centers, lobbies and waiting rooms, hospitals, and airports, to name a few.

Features

- Interactive 32" multi-touch screen built into a stable, durable and colorful table-shaped box.
- The screen is made of a hardened, anti-reflex treated 5 mm thick protective glass.
- Easily connected to the mains and wifi.
- Comes with 10 exclusive pre-installed apps.
- Additional learning and entertainment apps can be easily downloaded from Manico's own catalogue, as well as 3rd party providers.





FunTable



MARCH 30, 2022 1:09 PM

CPU	Rockchip RK3399 dual core Cortex-A72+quad-core Cortex-A53 CPU
GPU	ARM Mali-T860MP4 GPU
RAM	4GB
ROM	32GB
DISPLAY INTERFACE	LVDS interface (single, 6 dual, 8 dual) Support the maximum resolution of 1920×1080, support 7"-84" display EDP screen interface, support max resolution 4K
DISPLAY VOLTAGE	Support 3.3V/5V/12V Optional
TOUCH SCREEN	Provide I2C interface (multi-point capacitance touch) Support USB multi-point capacitance touch, multi-point infrared touch, multi-point acoustic touch, multi-point optical touch.
INTERNET	Wifi & BT module, support for Wi-Fi 802.11b / g / n / ac protocol. Support BT4.0
IMAGE ROTATION	Support 0 degrees, 90 degrees, 180 degrees, 270 degrees manual / automatic rotation, support for gravity sensing (optional).
REAL TIME CLOCK	Built-in real-time clock battery
OPERATING SYSTEM	Google Android 9
INTERFACE	Support MIPI interface camera 4*USB HOST (support usb peripheral as, usb camera@500W usb printer, USB disk, mouse, keyboard 2 sets of UART, 1set SPI or 1 set UART, 2 sets of SPI. Supports external serial devices (NFC module, printer, card reader, etc.) SD card, maximum support 64GB Class D amplifier: 1.5W * 2, 8 ohm, support for the microphone HDMI 2.0 output
AUDIO	MP3, WMA, WAV, APE, FLAC, AAC, OGG, M4A, 3GPP format
VIDEO	Support for 2160P @ 24FPS decoding of video formats such as H.264, MPEG2, VP6, VP8
PICTURE	Support for JPG, BMP, PNG and other image formats Browse and support rotation / slide show / image zoom function.
POWER ADAPTER INPUT	AC100-240V.50-60HZ, Output: DC12V 8A
COLOR	Green, Black, Ocean Blue, Red love, Yellow, Turquoise