



VR-TRAINING CATALOGUE

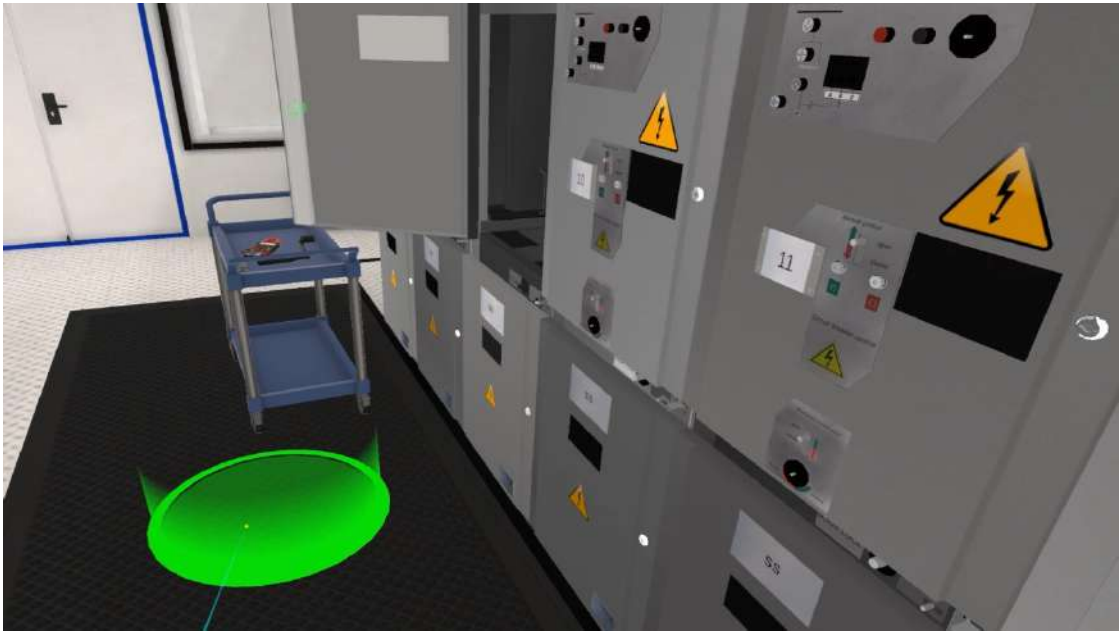
gwpro.io

TABLE OF CONTENTS

1. [Electrical safety](#)
2. [Work at height](#)
3. [Fire Safety \(WORKSHOP\)](#)
4. [Fire Safety \(OFFICE\)](#)
5. [Lockout Tagout \(LOTO\)](#)
6. [Confined Space Entry](#)
7. [Hot Work](#)
8. [Load Slinging](#)
9. [Maintenance Safety \(Pipes and Acids\)](#)
10. [Underground roof fall hazard assessment](#)
11. [Truck preparation for driving](#)
12. [Road accident with dangerous goods](#)
13. [Workplace safety](#)
14. [Scaffolding \(Wedge Lock Scaffolding Assembly Training\)](#)
15. [Arc Flash \(Flashover\)](#)
16. [Personal Protective Equipment](#)
17. [First Aid](#)



1. Electrical safety



The VR Experience:

The training will start with taking and signing the work permit and putting on the necessary PPE. After that you will collect the tools needed for the task and transport them on the cart to your task location.

When you are near the switchgear you will have to provide all the procedures for the safe disconnection of the cell. It includes placing the warning signs, checking the voltage, shutting down the equipment part by part, and using different keys and tools. After the shutdown, you will use special cart to withdraw the cell and move it away from the container.

Modes:

- Learning
- Training
- Exam

Devices:

- **HTC** Vive Focus 3
- **HTC** Vive [+Pro]
- **Meta** Quest 2, 3
- **Pico** Neo 3, 3 Pro, 4, 4 Enterprise

Languages:

English, Português, Arabic, Español,
普通话 (中国大陆), हिन्दी (भारत),
ಕನ್ನಡ (ಭಾರತ), বাংলা (ভারত),
日本語(日本), मराठी (भारत), Bahasa Melayu,
Türkçe, 한국어, Français, Deutsch,
Tiếng Việt, Italiano, فارسی, ગુજરાતી (ભારત)

Video:

https://drive.google.com/file/d/1RUZqkNAa_oFdY6JtEmPq8oSJd2hhADkWO/view?usp=sharing

2. Work at height



The VR Experience:

The assessment starts at the oil storage in the desert. You will prepare for work at height communicating with your co-worker, taping the perimeter, putting the warning signs, collecting the tools, check and put on the safe harness.

After that you will climb on the construction using self-locking hooks, providing all the safety measures while climbing. You will have to change your methods when meeting the different situations on your way.

In the end you will interact with the colleagues to protect them, use the ladder, stop the unsafe behavior and collect the unused tools on location.

Modes:

- Learning
- Training
- Exam

Languages:

English, Português, Arabic, Español,
普通话 (中国大陆), हिन्दी (भारत),
ඊನ್ನුඳ (ආරඡ), বাংলা (ভারত),
日本語 (日本), मराठी (भारत), Bahasa Melayu,
Türkçe, 한국어, Français, Deutsch,
Tiếng Việt, Italiano, فارسی, ગુજરાતી (ભારત)

Devices:

- **HTC** Vive Focus 3
- **HTC** Vive (+Pro)
- **Meta** Quest 2, 3
- **Pico** Neo 3, 3 Pro, 4, 4 Enterprise

Video:

https://drive.google.com/file/d/IRIL8K3y_vtsVcWxnUS-ZYPiEUvW3qOTU/view?usp=sharing

3. Fire Safety (WORKSHOP)



The VR Experience:

In the VR simulator you will go through all the fire-preventing measures and study them: evacuation plan, fire-exits, fire-alarm buttons, fire extinguisher.

Then you get into the situation of fire. You will have to immediately stop working and call the fire brigade by phone (indicating the address of the organization, name of the organization, fire origin point, last name, first name, patronymic, phone number), conduct evacuation according to the evacuation plan, turn on the manual fire alarm, follow the escape routes according to the signs and use a fire extinguisher in accordance with the operating rules.

The situation takes place in the workshop.

Modes:

- Learning
- Training
- Exam

Languages:

English, Português, Arabic, Español,
普通话 (中国大陆), हिन्दी (भारत),
தமிழ் (தமிழ்நாடு), বাংলা (ভারত),
日本語 (日本), मराठी (भारत), Bahasa Melayu,
Türkçe, 한국어, Français, Deutsch,
Tiếng Việt, Italiano, فارسی, ગુજરાતી (ભારત)

Devices:

- **HTC** Vive Focus 3
- **HTC** Vive (+Pro)
- **Meta** Quest 2, 3
- **Pico** Neo 3, 3 Pro, 4, 4 Enterprise

Video:

<https://drive.google.com/file/d/1RhqFiQHGscVjNQFShpbaZ-FISPrIQGA/view?usp=sharing>

4. Fire Safety (OFFICE)



The VR Experience:

In the VR simulator you will go through all the fire-preventing measures and study them: evacuation plan, fire-exits, fire-alarm buttons, fire extinguisher.

Then you get into the situation of fire. You will have to immediately stop working and call the fire brigade by phone (indicating the address of the organization, name of the organization, fire origin point, last name, first name, patronymic, phone number), conduct evacuation according to the evacuation plan, turn on the manual fire alarm, follow the escape routes according to the signs and use a fire extinguisher in accordance with the operating rules.

The situation takes place in an office building.

Modes:

- Learning
- Training
- Exam

Languages:

English, Português, Arabic, Español,
普通话 (中国大陆), हिन्दी (भारत),
తెలుగు (భారత), বাংলা (ভারত),
日本語 (日本), मराठी (भारत), Bahasa Melayu,
Türkçe, 한국어, Français, Deutsch,
Tiếng Việt, Italiano, فارسی, ગુજરાતી (ભારત)

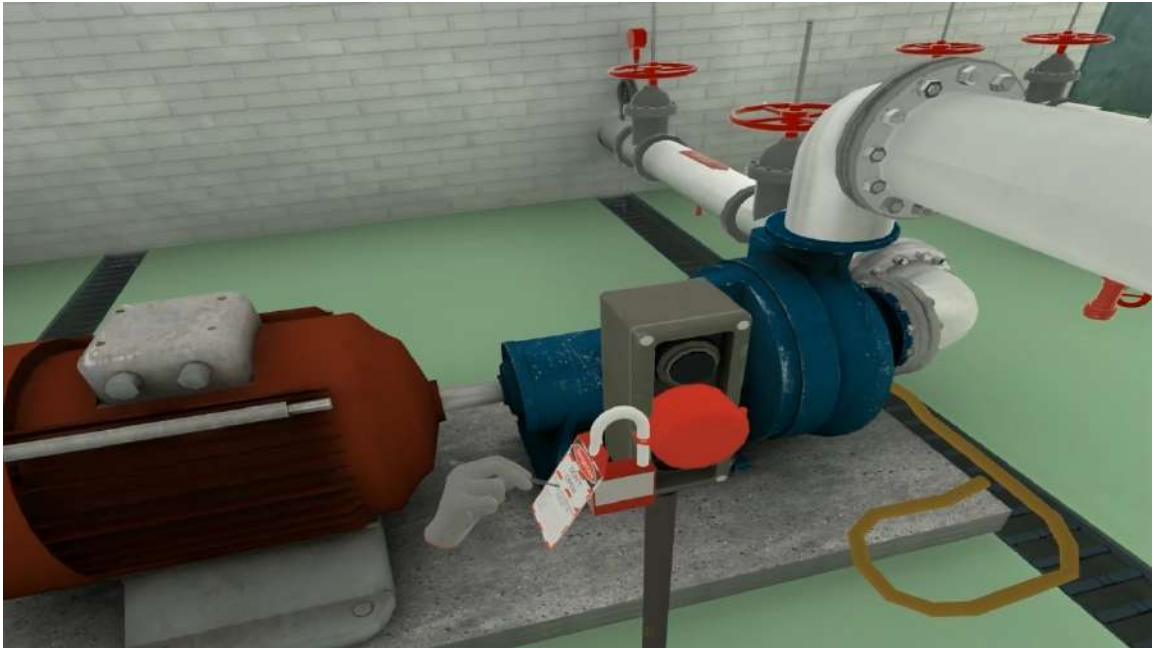
Devices:

- **HTC** Vive Focus 3
- **HTC** Vive (+Pro)
- **Meta** Quest 2, 3
- **Pico** Neo 3, 3 Pro, 4, 4 Enterprise

Video:

https://drive.google.com/file/d/1Rix7XPbaMv_zYsUGMd8ubgFgeIDgskGY/view?usp=sharing

5. Lockout Tagout (LOTO)



The VR Experience:

The training starts with the work permit checklist and access to the locking station with the help of the master key.

Then you will prepare and switch off the electrical pump, check if it is off, and start the lockout tagout process. According to the scheme and the signs on the pipes you will move in the building, locking and checking the pressure in the pipes, until the needed part of the pipeline will be safely cut off with locks and tags.

Finally you will bring and lock all the keys in the locking station and pass the master key to your supervisor.

Modes:

- Learning
- Training
- Exam

Languages:

English, Português, Arabic, Español,
普通话 (中国大陆), हिन्दी (भारत),
தமிழ் (இந்தியா), বাংলা (ভারত),
日本語 (日本), मराठी (भारत), Bahasa Melayu,
Türkçe, 한국어, Français, Deutsch,
Tiếng Việt, Italiano, فارسی, ગુજરાતી (ભારત)

Devices:

- **HTC** Vive Focus 3
- **HTC** Vive (+Pro)
- **Meta** Quest 2, 3
- **Pico** Neo 3, 3 Pro, 4, 4 Enterprise

Video:

<https://drive.google.com/file/d/1RkbEXisoDKfYNNH4PIG4CN8NFr47YNz2/view?usp=sharing>

6. Confined Space Entry



The VR Experience:

In this training user must prepare for entering the confined space. The assessment takes place at the empty oil storage tank. Training starts with the work permit, putting the warning signs, providing gas-test with the proper equipment, and locking and tagging all the equipment connected to the confined space. After that the user will have to organize ventilation of the confined space, and communicate with the colleagues to set the observers' and belayers' roles.

After that the user will put the harness on, connect it to the cable, and check the walkie-talkie. The final steps will be signing the enter permit and double check all the safety measures.

Modes:

- Learning
- Training
- Exam

Languages:

English, Português, Arabic, Español,
普通话 (中国大陆), हिन्दी (भारत),
ಕನ್ನಡ (ಭಾರತ), বাংলা (ভারত),
日本語 (日本), मराठी (भारत), Bahasa Melayu,
Türkçe, 한국어, Français, Deutsch,
Tiếng Việt, Italiano, فارسی, ગુજરાતી (ભારત)

Devices:

- **HTC** Vive Focus 3
- **HTC** Vive (+Pro)
- **Meta** Quest 2, 3
- **Pico** Neo 3, 3 Pro, 4, 4 Enterprise

Video:

https://drive.google.com/file/d/1RQR-z_sGyp2f-Yv9sTcl8HUFkAVw2mBC/view?usp=sharing

7. Hot Work



The VR Experience:

The user will start from showing his access documents to the supervisor. After that the user will put on PPE and check all the tools for any damage possible. Our VR training provides random damages on the equipment that makes training unique.

Then the user will tape the perimeter and put on the warning signs. Also, the user will analyze the gas-air environment; remove all explosive and flammable equipment from the hot work location.

After the double checking of all the measures you are set for the hot work.

Modes:

- Learning
- Training
- Exam

Devices:

- **HTC** Vive Focus 3
- **HTC** Vive [+Pro]
- **Meta** Quest 2, 3
- **Pico** Neo 3, 3 Pro, 4, 4 Enterprise

Languages:

English, Português, Arabic, Español,
普通话 (中国大陆), हिन्दी (भारत),
ಕನ್ನಡ (ಭಾರತ), বাংলা (ভারত),
日本語 (日本), मराठी (भारत), Bahasa Melayu,
Türkçe, 한국어, Français, Deutsch,
Tiếng Việt, Italiano, فارسی, ગુજરાતી (ભારત)

Video:

<https://drive.google.com/file/d/1RjPJ8d3dbDCb-plcTMVYUPR0A2dcj9BO/view?usp=sharing>

8. Load Slinging



The VR Experience:

The assessment takes place inside the large industrial storage location. The user will need to take and read the work permit, understand the details and the method of slinging for the task.

After that the user will have to set up the warning signs and tape the perimeter.

Next step will be to identify damaged tools and put them in a box, and then find the good ones that are suitable for the task.

Next steps will be checking the cat-head hook, detailed process of slinging, and the movement of a large pack of metal sheets to the desired location.

Modes:

- Learning
- Training
- Exam

Devices:

- **HTC** Vive Focus 3
- **HTC** Vive (+Pro)
- **Meta** Quest 2, 3
- **Pico** Neo 3, 3 Pro, 4, 4 Enterprise

Languages:

English, Português, Arabic, Español,
普通话 (中国大陆), हिन्दी (भारत),
ಕನ್ನಡ (ಭಾರತ), বাংলা (ভারত),
日本語 (日本), मराठी (भारत), Bahasa Melayu,
Türkçe, 한국어, Français, Deutsch,
Tiếng Việt, Italiano, فارسی, ગુજરાતી (ભારત)

Video:

<https://drive.google.com/file/d/1S8juT2M8tm25SHnHwTNmwCuR5EVpmcla/view?usp=sharing>

9. Maintenance Safety (Pipes and Acids)



The VR Experience:

The assessment starts in the control room where you put on different PPEs for protection from the chemicals used in the pipeline. Then you will get your work permit to start your work.

You will need to read the scheme of the pipes to shutdown proper pumps and close correct valves. Then you go to the machine room to make manual lockout tagout procedures on the pipes involved in the maintenance. You will use walkie-talkie to communicate with the control room and barricade tape to separate the maintenance area.

After that you will release the residual pressure in the pipeline, controlling it with the pressure gauges. You will have to wash chemicals from the floor with the help of water.

After that you will go back to the control room to report the completion of the task.

Modes:

- Learning
- Training
- Exam

Languages:

English, Português, Arabic, Español,
普通话 (中国大陆), हिन्दी (भारत),
தமிழ் (தமிழ்நாடு), বাংলা (ভারত),
日本語 (日本), मराठी (भारत), Bahasa Melayu,
Türkçe, 한국어, Français, Deutsch,
Tiếng Việt, Italiano, فارسی, ગુજરાતી (ભારત)

Devices:

- **HTC** Vive Focus 3
- **HTC** Vive (+Pro)
- **Meta** Quest 2, 3
- **Pico** Neo 3, 3 Pro, 4, 4 Enterprise

Video:

<https://drive.google.com/file/d/1S3wTED2gjbIXaz3lir4PLTLjm16vCwKe/view?usp=sharing>

10. Underground roof fall hazard assessment



The VR Experience:

The assessment starts underground, in a room with the foreman, who gives you the work permit. Then you take the rock scaling tool and go out.

While proceeding to your workplace you must find any loose rocks or fall hazards on your way. When you find one, you need to use your rock tool to eliminate the hazard or ask your co-worker for assistance.

You will barricade the tunnel when you find the hazard that you cannot remove yourself. And report this hazard to the foreman.

When you get to the rock face of the tunnel, you will be searching for hazards with the help of your headlamp, because there is no light in the place of blasting.

In the training and exam mode hazards are randomized to create a unique learning experience for the student.

Modes:

- Learning
- Training
- Exam

Languages:

English, Português, Arabic, Español,
普通话 (中国大陆), हिन्दी (भारत),
తెలుగు (భారత), বাংলা (ভারত),
日本語 (日本), मराठी (भारत), Bahasa Melayu,
Türkçe, 한국어, Français, Deutsch,
Tiếng Việt, Italiano, فارسی, ગુજરાતી (ભારત)

Devices:

- **HTC** Vive Focus 3
- **HTC** Vive (+Pro)
- **Meta** Quest 2, 3
- **Pico** Neo 3, 3 Pro, 4, 4 Enterprise

Video:

<https://drive.google.com/file/d/1cyXmyFiY4raQSFqWoD0G3XlgLSGenZZ2/view?usp=sharing>

11. Truck preparation for driving



The VR Experience:

The assessment starts in the room where you get your documents. Then you will get your work permit to start preparing for driving.

You will approach your vehicle and check for multiple possible problems, including oil and coolant levels, wheels, signs, driver's PPEs, all types of lights, leakages, fifth-wheel coupling, engine, vehicle systems and many other points in your checklist.

You will have to go through all points in your checklist to complete the task. In the training and the exam possible problems will be randomized to make each experience unique.

Modes:

- Learning
- Training
- Exam

Languages:

English, Português, Arabic, Español,

普通话 (中国大陆), हिन्दी (भारत),

தமிழ் (தமிழ்நாடு), বাংলা (ভারত),

日本語 (日本), मराठी (भारत), Bahasa Melayu,

Türkçe, 한국어, Français, Deutsch,

Tiếng Việt, Italiano, فارسی, ગુજરાતી (ભારત)

Devices:

- **HTC** Vive Focus 3
- **HTC** Vive (+Pro)
- **Meta** Quest 2, 3
- **Pico** Neo 3, 3 Pro, 4, 4 Enterprise

Video:

<https://drive.google.com/file/d/1VthZKWLv-HWMbejWN00X6viAM-KUfRfq/view?usp=sharing>

12. Road accident with dangerous goods



The VR Experience:

The assessment starts right after your vehicle has been hit by a following car.

You will stop the engine, take the sign, go out to place a sign, check the other driver's condition and his car, and check your vehicle's parts and the load.

After that you will communicate with your dispatcher, informing about the accident, make photos of both cars and more.

The accident takes place in the morning on the road in a rural location.

Modes:

- Learning
- Training
- Exam

Devices:

- **HTC** Vive Focus 3
- **HTC** Vive [+Pro]
- **Meta** Quest 2, 3
- **Pico** Neo 3, 3 Pro, 4, 4 Enterprise

Languages:

English, Português, Arabic, Español,
普通话 (中国大陆), हिन्दी (भारत),
ಕನ್ನಡ (ಭಾರತ), বাংলা (ভারত),
日本語 (日本), मराठी (भारत), Bahasa Melayu,
Türkçe, 한국어, Français, Deutsch,
Tiếng Việt, Italiano, فارسی, ગુજરાતી (ભારત)

Video:

<https://drive.google.com/file/d/1km2hzqUyDZtHi-vPIIC8UvLdF2-AZ63A/view?usp=sharing>

13. Workplace safety



The VR experience:

Workplace Safety VR Training will teach you to identify factors that make the work unsafe and how to eliminate them.

You will have to find hazards in the industrial environment around different workplaces, pay attention to the procedure for compliance with labor protection requirements and several applicable technical and administrative measures of labor protection requirements (for example, mandatory PPE, monitor temperature exposure limits, and protective measures for exposure to harmful and hazardous industrial factors).

The training takes place in the warehouse with the equipment.

Modes:

- Learning
- Training
- Exam

Devices:

- **HTC** Vive Focus 3
- **HTC** Vive (+Pro)
- **Meta** Quest 2, 3
- **Pico** Neo 3, 3 Pro, 4, 4 Enterprise

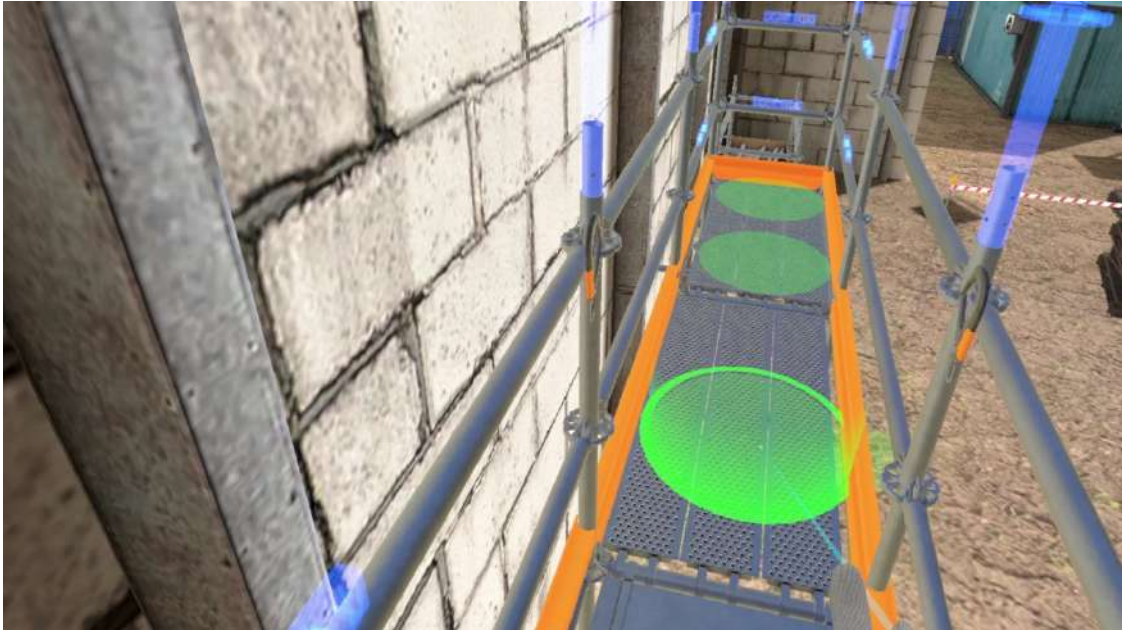
Languages:

English, Português, Arabic, Español,
普通话 (中国大陆), हिन्दी (भारत),
తెలుగు (భారత), বাংলা (ভারত),
日本語 (日本), मराठी (भारत), Bahasa Melayu,
Türkçe, 한국어, Français, Deutsch,
Tiếng Việt, Italiano, فارسی, ગુજરાતી (ભારત)

Video:

<https://drive.google.com/file/d/1UYBk2EN8djX0J4SRca40joFrPk0kigr0/view?usp=sharing>

14. Scaffolding (Wedge Lock Scaffolding Assembly Training)



The VR Experience:

In the VR simulator, the user will prepare the site, tools, construct three levels of the wedge scaffolding, control the horizontal level of the scaffolding parts, and mark the scaffolding as ready for use. The second member of the team will help with the task.

The simulator begins with the work permit and the task, collecting and placing the necessary tools on the belt and taping the perimeter. Then the user learns to build scaffolding levels and verticals step by step, controlling the correctness of the construction.

We will use the safety harness for working at height, a hammer drill to create anchor points, and ladders for easy movement.

Scaffolding will be erected and inspected according to the standards and tagged as ready for use.

Modes:

- Learning
- Training
- Exam

Languages:

English, Português, Arabic, Español,
普通话 (中国大陆), हिन्दी (भारत),
தமிழ் (தமிழ்நாடு), বাংলা (ভারত),
日本語 (日本), मराठी (भारत), Bahasa Melayu,
Türkçe, 한국어, Français, Deutsch,
Tiếng Việt, Italiano, فارسی, ગુજરાતી (ભારત)

Devices:

- **HTC** Vive Focus 3
- **HTC** Vive (+Pro)
- **Meta** Quest 2, 3
- **Pico** Neo 3, 3 Pro, 4, 4 Enterprise

Video:

<https://drive.google.com/file/d/1Q8N3NyJbKpp68jG4B6Y0Fh0SgR-118pf/view?usp=sharing>

15. Arc Flash (Flashover)



The VR Experience:

In the VR Simulator you will experience 2 different situations, where you need to stay safe from the Arc Flash while doing your job.

You will work in a classroom and in an industrial environment as an electrician. In each situation you will have to understand the task, working conditions and the wiring diagram, choose appropriate personal protective equipment, check the voltage, work with different meter modes, lockout tagout electrical equipment and much more.

The VR Simulator includes 2 different modules with Learning, Training and Exam mode each.

Modes:

- Learning
- Training
- Exam

Devices:

- **HTC** Vive Focus 3
- **HTC** Vive (+Pro)
- **Meta** Quest 2, 3
- **Pico** Neo 3, 3 Pro, 4, 4 Enterprise

Languages:

English, Português, Arabic, Español,
普通话 (中国大陆), हिन्दी (भारत),
ಕನ್ನಡ (ಭಾರತ), বাংলা (ভারত),
日本語(日本), मराठी (भारत), Bahasa Melayu,
Türkçe, 한국어, Français, Deutsch,
Tiếng Việt, Italiano, فارسی, ગુજરાતી (ભારત)

Video:

https://drive.google.com/file/d/1wRcpuBVBZPnlRcG_u5wCMIg-yf6QZ9SI/view?usp=sharing

16. Personal Protective Equipment



The VR Experience:

Personal Protective Equipment, commonly referred to as "PPE", is equipment worn to minimize exposure to hazards that cause serious workplace injuries and illnesses. These injuries and illnesses can result from exposure to chemical, radiological, physical, electrical, mechanical, or other workplace hazards.

In the VR Training you will find the following preparation scenarios:

Electrical Work: 1 kV, 10 kV, 15 kV, 25 kV Tasks

Chemical hazards: Levels A,B,C,D

The VR Training includes checking basic PPEs, declining the damaged ones, understanding of the checking process, dividing the PPEs into the ones that you are wearing now and the ones that you should bring to your workplace

Modes:

- Learning
- Training
- Exam

Devices:

- **HTC** Vive Focus 3
- **HTC** Vive (+Pro)
- **Meta** Quest 2, 3
- **Pico** Neo 3, 3 Pro, 4, 4 Enterprise

Languages:

English, Português, Arabic, Español,
普通话 (中国大陆), हिन्दी (भारत),
ಕನ್ನಡ (ಭಾರತ), বাংলা (ভারত),
日本語(日本), मराठी (भारत), Bahasa Melayu,
Türkçe, 한국어, Français, Deutsch,
Tiếng Việt, Italiano, فارسی, ગુજરાતી (ભારત)

Video:

<https://drive.google.com/file/d/IDKcyctZnf-Z1eLr2d0nD53NcZyWALDi-/view?usp=sharing>

17. First Aid



The VR Experience:

Immersive virtual reality first aid training. Learn essential life-saving skills in a realistic and interactive environment where you can practice CPR, bandaging wounds and assessing injuries.

You witness a fall from a ladder that resulted in a loss of consciousness and a leg injury. You stop work, grab the first aid kit and check the injured worker's condition. You then ask your colleague to call an ambulance and start CPR. After successful CPR, you cut off the uniform and bandage the wound, noting the time of the bandage. You cover the victim and wait for the ambulance.

Our VR training enables you to make decisions under pressure and gain confidence in dealing with emergency situations. With detailed feedback and guided instruction, you'll be prepared to respond effectively in real-life emergencies. Training takes place in an industrial environment.

Modes:

- Learning
- Training
- Exam

Devices:

- **HTC** Vive Focus 3
- **HTC** Vive (+Pro)
- **Meta** Quest 2, 3
- **Pico** Neo 3, 3 Pro, 4, 4 Enterprise

Languages:

English, Português, Arabic, Español,
普通话 (中国大陆), हिन्दी (भारत),
ಕನ್ನಡ (ಭಾರತ), বাংলা (ভারত),
日本語 (日本), मराठी (भारत), Bahasa Melayu,
Türkçe, 한국어, Français, Deutsch,
Tiếng Việt, Italiano, فارسی, ગુજરાતી (ભારત)

Video:

<https://drive.google.com/file/d/1xITA02uAsgsNgnAKG2GtYC8DfJil4wtS/view?usp=sharing>